

**Features**

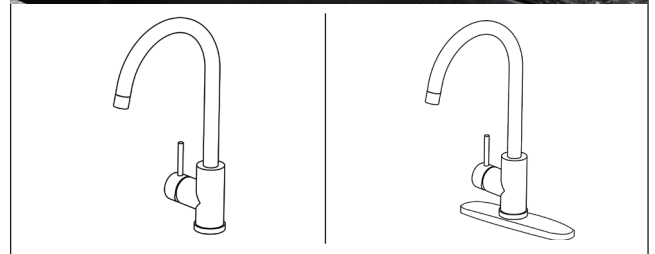
- Solid brass body
- Ceramic disc cartridge
- Single lever handle
- 180 degree swivel spout
- Installation in a 1-3/8" hole
- 1-1/2" maximum deck thickness
- High arc spout.
- 1.8 gpm max. (6.8L/min) @ 60psi - saves 20% more water
- Flexible supply lines with 3/8" compression fittings
- Escutcheon plate for 1, 2 or 3 hole sink applications

**Optional Accessories**

- T3600 soap dispenser.

**Warranty**

- Lifetime Limited Warranty for residential use
- 5 Year Limited Warranty for commercial use



T3510 without escutcheon plate

T3510 with escutcheon plate

**Specified Model**

Model	<b>T3510</b>
Faucet Height	15 <sup>5</sup> / <sub>32</sub> " (385 mm)
Spout Reach	8 <sup>7</sup> / <sub>16</sub> " (210 mm)
Deck to Aerator	10 <sup>53</sup> / <sub>64</sub> " (275 mm)
Flow Rate	1.8 gpm max (6.8L/min) @ 60 psi
Shipping Weight	9 lbs.
Material	brass construction
Installation	deck mount, single hole

**To Be Specified:**

	Finish
<input type="checkbox"/>	PC Polished Chrome
<input type="checkbox"/>	LS Luxe Stainless

**Codes/Standards**

Certified to CUPC  
 Certified to AB1953  
 Certified to NSF/ANSI 61  
 Complies with Federal Lead Plumbing Law as certified with IAMPO R&T inc.  
 ADA compliant for lever handle



**Notes**

Install this product according to the installation instructions.

